



EverSmart Scanners

Software Version 2.5.3
Official Release Notes

Catalog Number- 399Z52259E
Software Version 2.5.3

IMPORTANT NOTICE

This document is delivered subject to the following conditions and restrictions: This document contains proprietary information of CreoScitex Corporation Ltd. Such information is hereby supplied solely for the purpose of assisting authorized users of CreoScitex products. Without the express prior written permission of CreoScitex, no part of the contents hereof may be used for any other purpose, disclosed to any person or firm, or reproduced by any means. The text and drawings herein are for the purposes of illustration and reference only. The specifications on which they are based are subject to change without notice.

Catalog No. 399Z52259E

Document No. 771-52259E

Copyright © 1999 by

CreoScitex Corporation Ltd.

All Rights Reserved

July, 2000

TRADEMARKS

CreoScitex and the CreoScitex logo are registered trademarks of **Creo Products Inc.**

Apple and Power Macintosh are registered trademarks of Apple Computer Inc.

Other company and brand, product and service names are for identification purposes only and may be trademarks or registered trademarks of their respective holders. Data subject to change without notice.

TABLE OF CONTENTS

EVERSMART SCANNERS SOFTWARE VERSION 2.5.3 OFFICIAL RELEASE NOTES	1
New Features and Enhancements.....	2
Known Limitations	5
Bugs and limitations corrected from previous versions	6
Update to the User Guide	7

EverSmart Scanners Software Version 2.5.3

Official Release Notes

Overview

CreoScitex Corporation is pleased to announce the official release of the *EverSmart* scanners software version 2.5.3 (Catalog No. 501V52959D). The *EverSmart* version 2.5.3 contains new features that provide you with tools that offer you better control in color correction and allow improved interactive editing. For a detailed description of the scanner application, refer to the *EverSmart Scanners User Guide, Catalog No. 399Z50704B*

The *EverSmart* scanners software version 2.5.3 can be used with the following *EverSmart* scanners:

- EverSmart Supreme
- EverSmart Pro II
- EverSmart Pro
- EverSmart

Note: An upgrade kit for *EverSmart Pro* to *EverSmart Pro II* (P/N 510K1M856) is available.

The *EverSmart* scanners software version 2.5.3 can be used with the following *EverSmart DOT* applications:

- EverSmartDOT for EverSmart Pro
- EverSmartDOT for EverSmart Pro II
- EverSmartDOT for EverSmart Supreme

Note: For a detailed description of the EverSmart DOT scanner application, refer to the *EverSmart DOT User Guide* (Catalog No. 399Z51895B).

This document provides the following information:

- New features and enhancements
- Currently known limitations
- Bugs and limitations corrected from previous versions
- Update to the User Guide

Note: If you are upgrading a version earlier than version 2.5.0, after installing the software, you must create all the scanner hardware tables using the *Install&Utils* program.

New Features and Enhancements

Following is a brief description of the new features and enhancements in the *EverSmart* scanners software version 2.5.3.

Adaptec 2903B SCSI driver

As of this version, the *Installer* program automatically installs the *Adaptec 2903B SCSI* driver.

New Sharp Algorithms (EverSmart Pro only)

The *EverSmart Pro* scanners have a new structure in Smart Set. When you open the *Scan* dialog box, a message appears prompting users who want to use old Smart Set (old Sharp algorithms).

New Memory Management

New Memory management has been implemented in this version. The first time you launch the application, a message appears that prompts you to define the scratch folder on your internal disk (see section on *General Preferences* in Chapter 9 in the *EverSmart Scanners User Guide*).

It is also strongly recommended that your scanner be the only connection on the SCSI chain (see Option 1 in Chapter 5 in the *EverSmart Scanners Installation and Maintenance Guide*).

If you choose to ignore this recommendation, a *Not Optimal* message pops up every time you launch the scanning application.

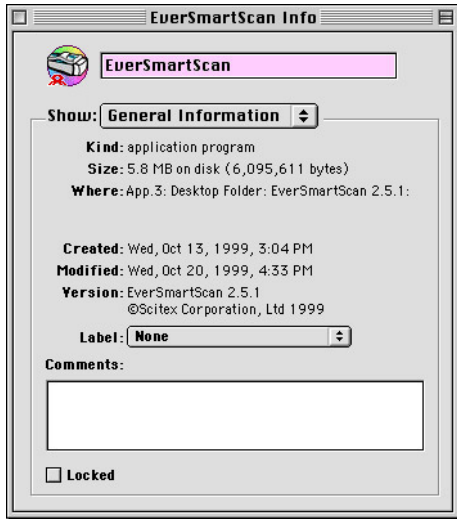
For more information and updated tips, please read the *ReadMe first* file on the CD and the Software Release Notes located in your *EverSmart Scan Application* folder.

Using High Resolution Monitors

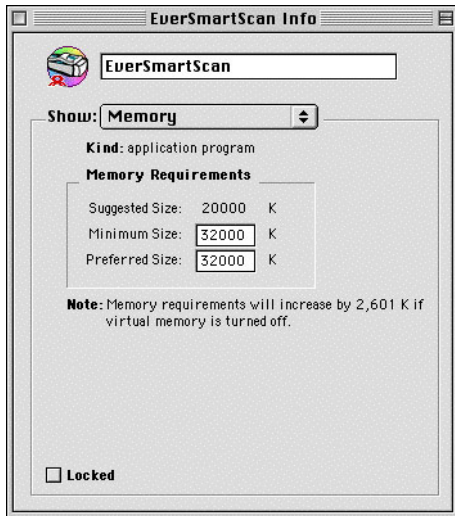
When you set your monitor to a resolution higher than 1024x768, the system prompts you to increase the *EverSmart* application memory to 32 MB.

To increase the memory, do the following:

1. Open the *EverSmart Application* folder.
2. Click to select the *EverSmart Scan* icon.
3. Press <⌘ I> to open the *EverSmart Scanner Info* dialog box.



4. From the *Show* list, select **Memory**.
5. In the *Memory Requirements* field, enter 32000 K both the *Minimum Size* and the *Preferred Size* fields.



EverSmart DOT – optional feature

EverSmart DOT is an optional feature for the *EverSmart* software. *EverSmart DOT* requires a dedicated software access key to run. For more information about *EverSmart DOT*, please refer to *EverSmart DOT User Guide* (included in the *EverSmart DOT* kit).

Scanning in Copy DOT mode

The *Setup* dialog box was modified to enable various Moiré reduction settings. You can now set a different Moiré filter for each separation.

You can find the updated *EverSmart DOT User Guide* and the *EverSmart DOT Tips* in PDF format in your *EverSmart Documentation* folder.

Known Limitations

- In some scanners, when selecting *All board* format for scanning reflective originals, the crop may become illegal.

Workaround: Press the right arrow key to move the crop slightly, then proceed with the scanning.

- **SCSI Adapter Adaptec 2903B/2906**

If the SCSI Adapter CD is included in the box, use it according to the manufacturer's instructions.

- As of this version, the *Installer* program automatically installs the *Adaptec 2903B SCSI* driver.
 - The *2903B SCSI* adapter driver is compatible with the *2906 SCSI* adapter driver
 - The *2906 SCSI* adapter driver should be used with the *2903B SCSI* adapter.
 - For proper work of the *EverSmart* scanning application version 2.5.x with Macintosh G4 using SCSI adapter board 2903B/2906, it is of utmost importance to use the SCSI version 1.1 or higher.
- Small display impurities may appear due to the limitations of the new Macintosh graphic accelerator. These impurities can be avoided by downloading the new ATI display driver *ATIRAGE 128 Update 1.0.smi* from <http://asu.info.apple.com/swupdates.nsf/artnum/n11262>.
 - Use the USB software access key only if you are working with a Power Macintosh G4 platform. With all other platforms, use the ABD software access key.
 - Intermittently, when you use the Multi-crop option in CopyDOT mode, the Master file is empty.

Bugs and limitations corrected from previous versions

Save Load setting

You can save any preferable setting and reload

Crop analysis limitation

There were limitations on the crop definition sequence.

Resizing crops

When you changed the crop size using the <Shift> key, the crop was not resized proportionally.

Scanning to a server with Helios 2.5

You can now save files bigger than 40MB.

Connecting Several Software Access Keys

Mac can now be connected to a number of software access keys without slowing down interactive work.

Scanning to Big Disks

You can now scan images to big disks without the scanner hanging up.

Update to the User Guide

Following is a brief description of the new features and enhancements in the *EverSmart* scanners software version 2.5.3.

High Resolution Preview

The *Preview* scan size was increased to give better appearance to scanner image. The software checks the screen resolution and optimizes the *Preview* scan size accordingly.

Max Detail

The scan size of *Max Detail* was increased to give better view of scanned image which is needed when scanning max detail with a large scale.

LS Curves

The new *LS Curves* function enables you to perform color corrections in an image by modifying the luminance and the saturation values of a selected color. Together with the new *Color Correction Mask* tool, the *LS Curves* function offers you a convenient tool for performing interactive color corrections. It gives you more control over the range and the level of your color corrections. See *LS Curves* later in this section for more information how to use this feature.

Color Correction Mask

The *Color Correction Mask* is a new feature in *EverSmart Pro/EverSmart Pro II* and *Ever Smart Supreme* scanners that gives you control over the exact pixels in the image on which you want to make color corrections. This tool is convenient for interactive editing, i.e., it allows you to see the color corrections on the preview immediately, before applying the changes. See *Color Correction Mask* on page 10 for information how to use this feature.

Auto Naming for Final Scans

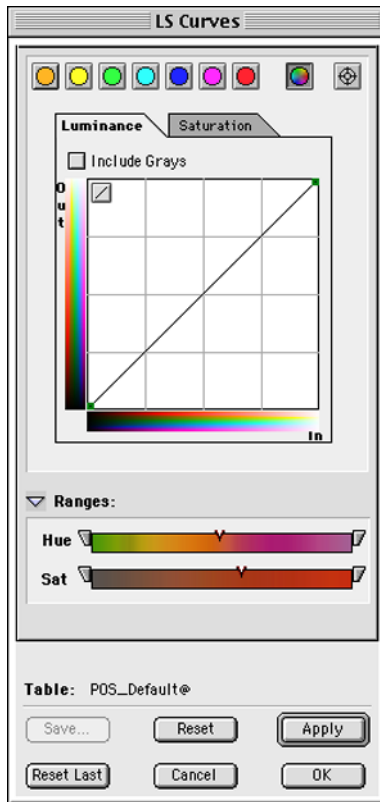
This features enables you to customize a series of final scans by using the Prefix/Suffix settings. See *Auto Naming for Final Scans* later in this section for more information how to use this feature.

LS Curves

The new **LS Curves** function enables you to perform color corrections in an image by modifying the luminance and the saturation values of a selected color. Together with the new *Color Correction Mask* tool, the *LS Curves* function offers you a convenient tool for performing interactive color corrections. It gives you more control over the range and the level of your color corrections.



- Click the *LS Curves* icon in the *Image* palette or select **LS Curves** from the *Image* menu in *Menu bar*; the *LS Curves* dialog box appears.



LS Curves dialog box

Color palette

Use the *Color palette* icons for global color changes for each color (separately).

All Colors

Use the *All Colors* icon for global color changes for all colors.

Picker

Use the picker to select a color/to mark a reference point in an image.

Luminance/Saturation controls

The *LS Curves* dialog box has two tabs, Luminance and Saturation. Select **Luminance** when you want interactively to brighten or darken the image along the luminance axis. Select **Saturation** when you want to change the colorfulness of the image, i.e. to neutralize the colors in the image or make them more colorful.

Include Grays

Use the *Include Grays* option to apply the color changes also to gray colors. This option is available only when making color corrections to all colors.

Reset

The *Reset* icon, at the top left corner of the LS Curves Graph, cancels changes applied to the curve. The *Reset* button, at the bottom of the dialog box, cancels all the changes made in the LS Curves dialog box. The *Reset Last* button cancels the last change made in the LS Curve dialog box.

LS Curves Graph

The horizontal axis represents the luminance/saturation values of the image before the color changes (input). The vertical axis represents the luminance/saturation values of the image after the color changes (output). When the *Luminance* tab is selected, the more you drag the anchor point(s) upwards, the brighter the image becomes. When the *Saturation* tab is selected, the more you drag the anchor point(s) upward, the more saturated the image becomes.

Ranges control

The *Ranges* control includes the *Hue* and *Luminance/Saturation* sliders. Each slider has a marker that indicates the selected color.

Ranges control for Luminance

The *Ranges* control for luminance defines, in hue and saturation values, the effective range of your color changes. In other words, it defines which hues and saturation levels will be affected by your change.

Ranges control for Saturation

The *Ranges* control for saturation defines, in hue and luminance values, the effective range of your color changes. In other words, it defines which hues and luminance levels will be affected by your change.

Color Correction Mask



Color correction mask is a new feature in *EverSmart Pro* and *EverSmart Supreme* scanners that gives you control over the exact pixels in the image on which you want to make color corrections. This tool is convenient for interactive editing, i.e. it allows you to see the color corrections on the preview immediately, before applying the changes.

Color Correction Mask icon appears on the toolbar along the left side of the *Image display* window.

- Perform your color corrections, then click the *Color Correction Mask* icon. The pixels in the image that were affected appear in the complementary color. If no additional color correction is needed, click **Apply** to update the changes.

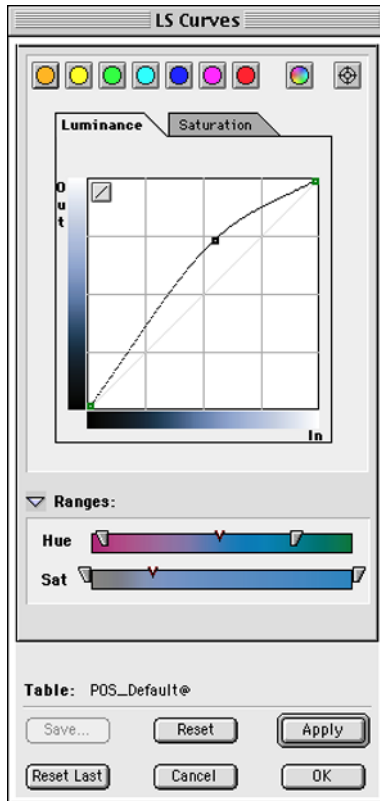
To switch between the mask view and the regular view, click *Color Correction Mask* icon again.

Performing color corrections

The *LS Curves* function used together with the *Color Correction Mask* tool offers you a strong interactive tool for color corrections. It gives you full control over the exact colors you want to apply the change to.

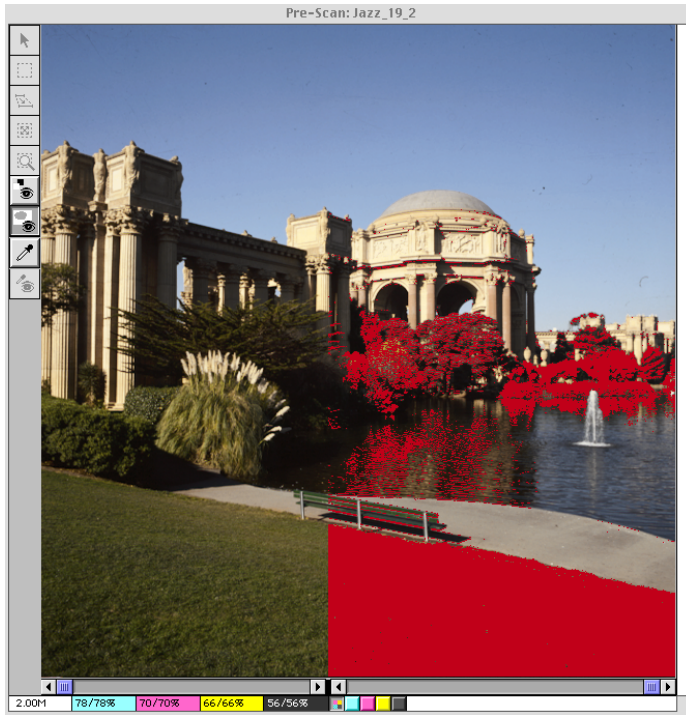
To perform color corrections in an image:

1. Select a color from the image using the picker; an anchor point appears in the curve.
2. Drag the anchor point(s) upward if you want to brighten the image, or make it more saturated. Drag the anchor point(s) down if you want to darken the image or make it more neutral.





3. Click the *Color Correction Mask* icon in the *Image display* window to view the pixels that were affected by the change you made.



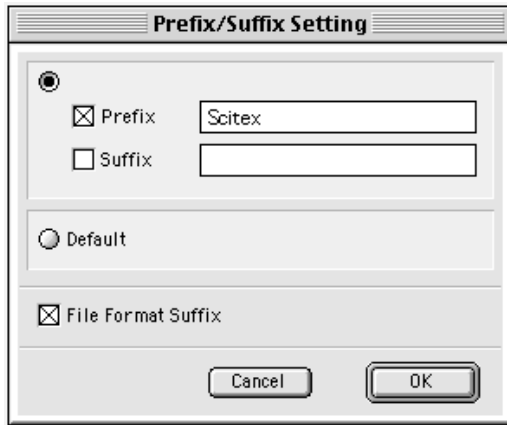
4. Use the *Ranges* control (Hue and Luminance/Saturation sliders) to limit the effect only to the exact colors you want to change. Set the *Hue* and/or the *Luminance* or *Saturation* sliders by moving one or both controls of each slider you want to modify to broaden or limit the range effect.

Auto Naming for Final Scans

The new *Auto Naming for Final Scans* feature allows the user to automatically set the scan name by using the *Prefix/Suffix Setting* option. You can select the option to add a prefix or suffix according to the file formats. The prefix/suffix will be added before sending the crops to the final scan.

To use Prefix/Suffix Settings function:

1. From the *Setup* menu, choose *Prefix/Suffix Settings* command. The *Prefix/Suffix Settings* dialog box opens.



By default, the system adds **Scan**-prefix to the crop name.

2. To edit or delete the prefix, or to add a suffix, select the *Prefix* and/or *Suffix* check box and enter the prefix/suffix you want in the text box.
3. To use the default name (e.g. Scan_ 1_1) select *Default* option.
4. To add a file format suffix to the name, select the *File Format Suffix* check box. You can apply this option only when scanning in *Color* or *BW* mode.